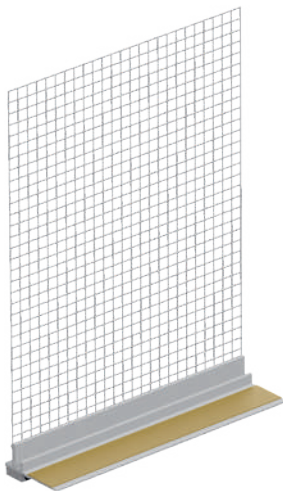
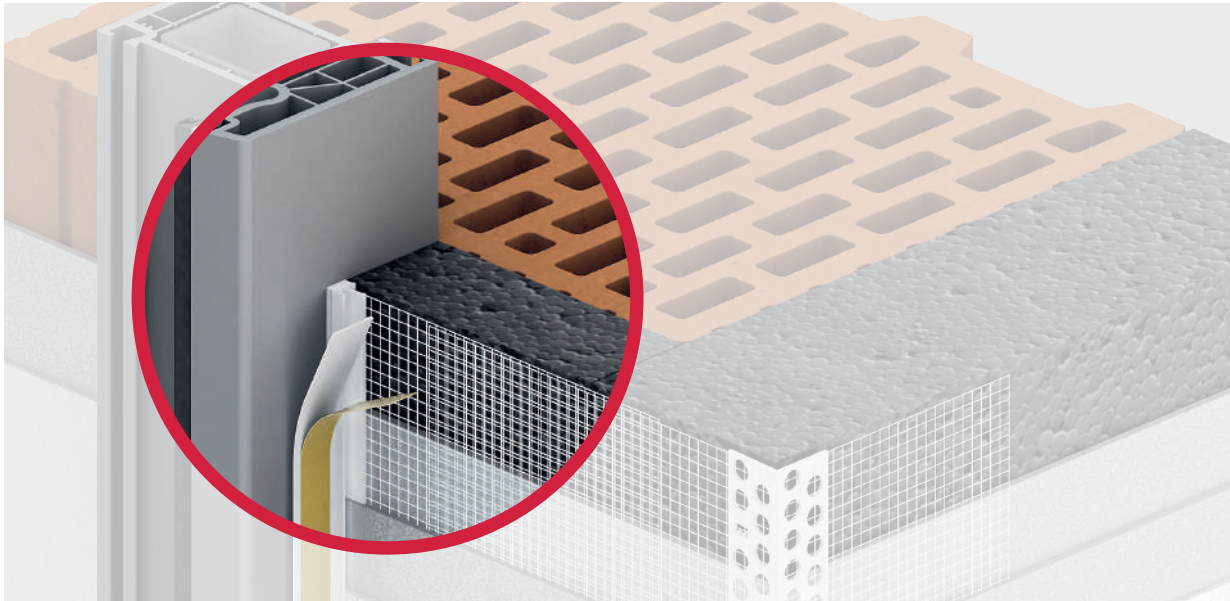


Reveal bead with mesh EJOT® Pro GAP Active Flex

Self-adhesive plastic profile with glass fiber mesh, highly flexible polyethylene foam tape and bendable protective flap with self-adhesive transfer tape



Application range

- > Reveal bead with mesh for creating an exact, aligned and perpendicular plaster finish on windows and doors.

Features

- > Increased movement absorption according to ift test report 19-004407-PR01
- > Class C according to VDPM leaflet (page 13)
- > Driving rain-tight connection according to ift test report 20-004075-PR01
- > Exact and clean plaster finish
- > Easy processing
- > Integrated transfer tape for attaching the cover film
- > No subsequent cleaning work

Technical Data

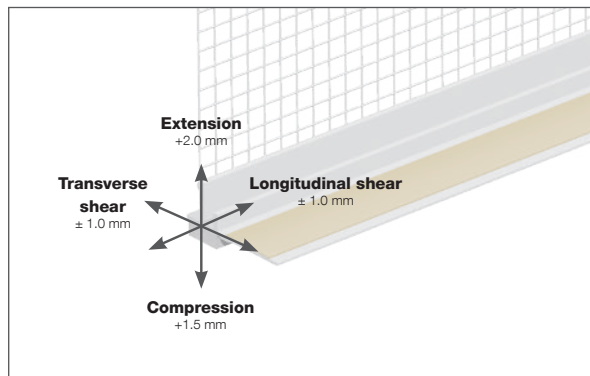
- > PVC-U (unplasticized) profile with fiber glass mesh 160 g
- > Alkali-resistant and non-shifting
- > Mesh flag 12.5 cm
- > Highly flexible polyethylene foam tape impervious to driving rain 8 x 3 mm with high adhesive strength, optimal aging and moisture resistance as well as maximum resistance to UV and ozone radiation
- > Movements can only be absorbed depending on the elasticity of the polyethylene sealing tape
- > Self-adhesive transfer tape 12 mm for holding the protective film

Certifications

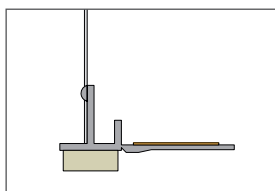


Operating principle Active Flex

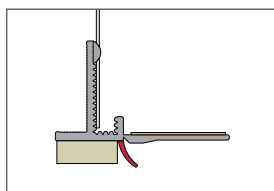
With newly developed high-performance foam tape. This allows a three-dimensional movement to be permanently absorbed.



Geometry



EJOT Pro GAP09-AF/01
without protective lip



EJOT Pro GAP 09-AF/02L
with protective lip

Notes

- > Store in a cool and dry place
- > Transport and storage lying down

Order description	Dimensions [mm]	Length [m]	Pieces / box	Running metres / box	Box / pallet	Running metres / pallet	Mesh	Article number
EJOT Pro GAP09-AF/01-240-160-WN-12.5	9	2.4	30	72	44	3,168	White / 160 g	8803040011
EJOT Pro GAP09-AF/02L-240-160-WN-12.5 with protective lip	9	2.4	30	72	44	3,168	White / 160 g	8803040006

Processing instructions

The surface must be level, dry and free of dust and grease. Any residues that reduce adhesion must be removed. Carry out an adhesive test! See page 30.

Application and substrate temperature +5 to +40 °C. Cut the reveal bead with mesh to the required length with mitre or skirting scissors. Glue the profile onto the window frame and press it on firmly. Stick the cover film onto the provided transfer tape on the flap. Briefly fold the mesh forwards to apply the reinforcement compound. The mesh is then embedded in the wet reinforcement compound and filled in with a spatula. After completing the work, the protective flap must be bent towards the trigger bar and then pulled off from top to bottom parallel to the profile. Follow the processing instructions!